



WELCOME TO

PULLMAN ISTANBUL HOTEL AND CONVENTION CENTER

setting new standards for luxury, comfort,
and world-class events in Istanbul



Contents

01

ABOUT THE
HOTEL

02

ROOMS &
FEATURES

03

DINING
EXPERIENCES

04

PULLMAN
CONVENTION
CENTER

05

FIT & SPA

06

MERCURE WEST
ISTANBUL HOTEL



About The Hotel

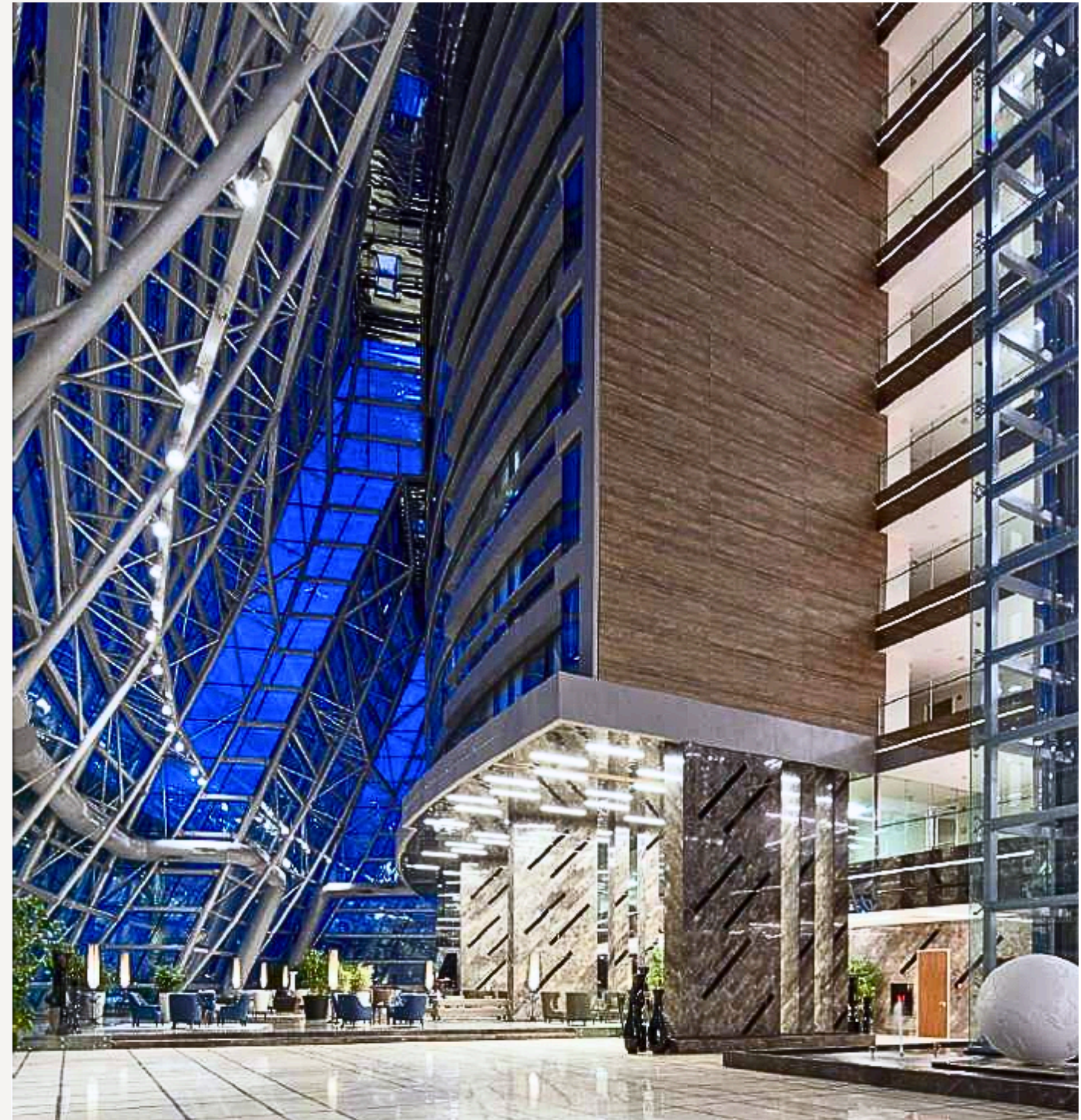
**Exceptional Comfort | Contemporary Design
| Modern Excellence**

Pullman & Mercure Istanbul Hotel & Convention Center offers 16,000 sqm of event space and 780 rooms and suites across both hotels, earning its place among the top three convention venues in Istanbul.

Prime Location

STRATEGIC LOCATION FOR BUSINESS AND LEISURE

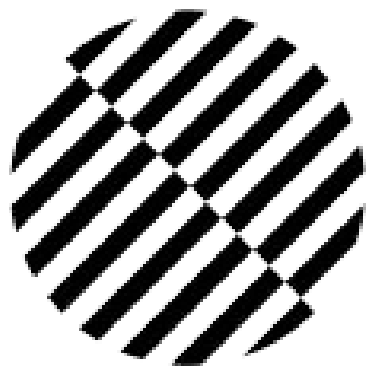
5 MINUTES	WORLD TRADE CENTER & IFM ISTANBUL
5 MINUTES	CNR EXPO CENTER
17 MINUTES	TUYAP FAIR CENTER
25 MINUTES	HISTORIC OLD CITY (SULTANAHMET)
35 MINUTES	TAKSİM (CITY CENTER)
35 MINUTES	ISTANBUL AIRPORT
50 MINUTES	SABIHA GÖKÇEN INTERNATIONAL AIRPORT



General Features

- 5-STAR HOTEL
- 403 ELEGANT ROOMS & SUITES
- 2 SIGNATURE RESTAURANTS AND 2 BARS
- INDOOR HEATED SWIMMING POOL
- FULL-SERVICE HAIR SALON
- CAR PARK AND VALET SERVICE
- 4 DEDICATED CREW LOUNGES
- EXECUTIVE LOUNGE ACCESS
- 24-HOUR BUSINESS CENTER
- 24-HOUR IN-ROOM DINING
- SPA & FITNESS CENTER
- COMPLIMENTARY WI-FI THROUGHOUT
- CONCIERGE SERVICE AVAILABLE FOR AIRPORT AND SHOPPING MALL TRANSFERS
- LAUNDRY & DRY CLEANING SERVICES
- FULL CONVENTION CENTER ACCESS

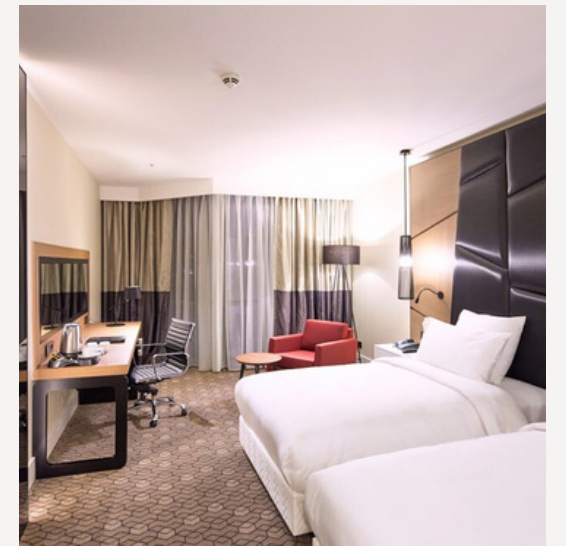
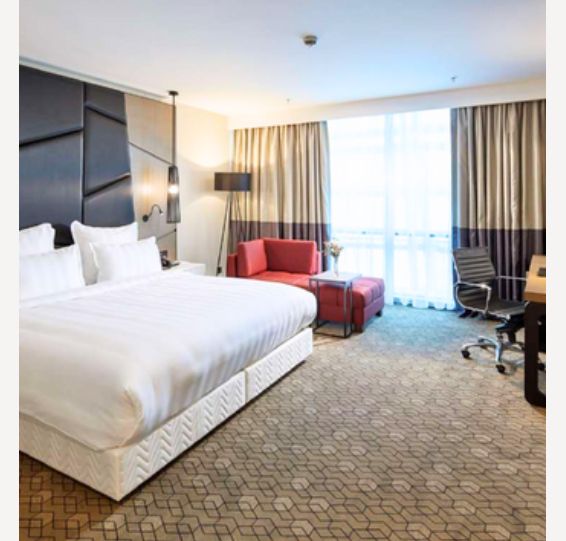
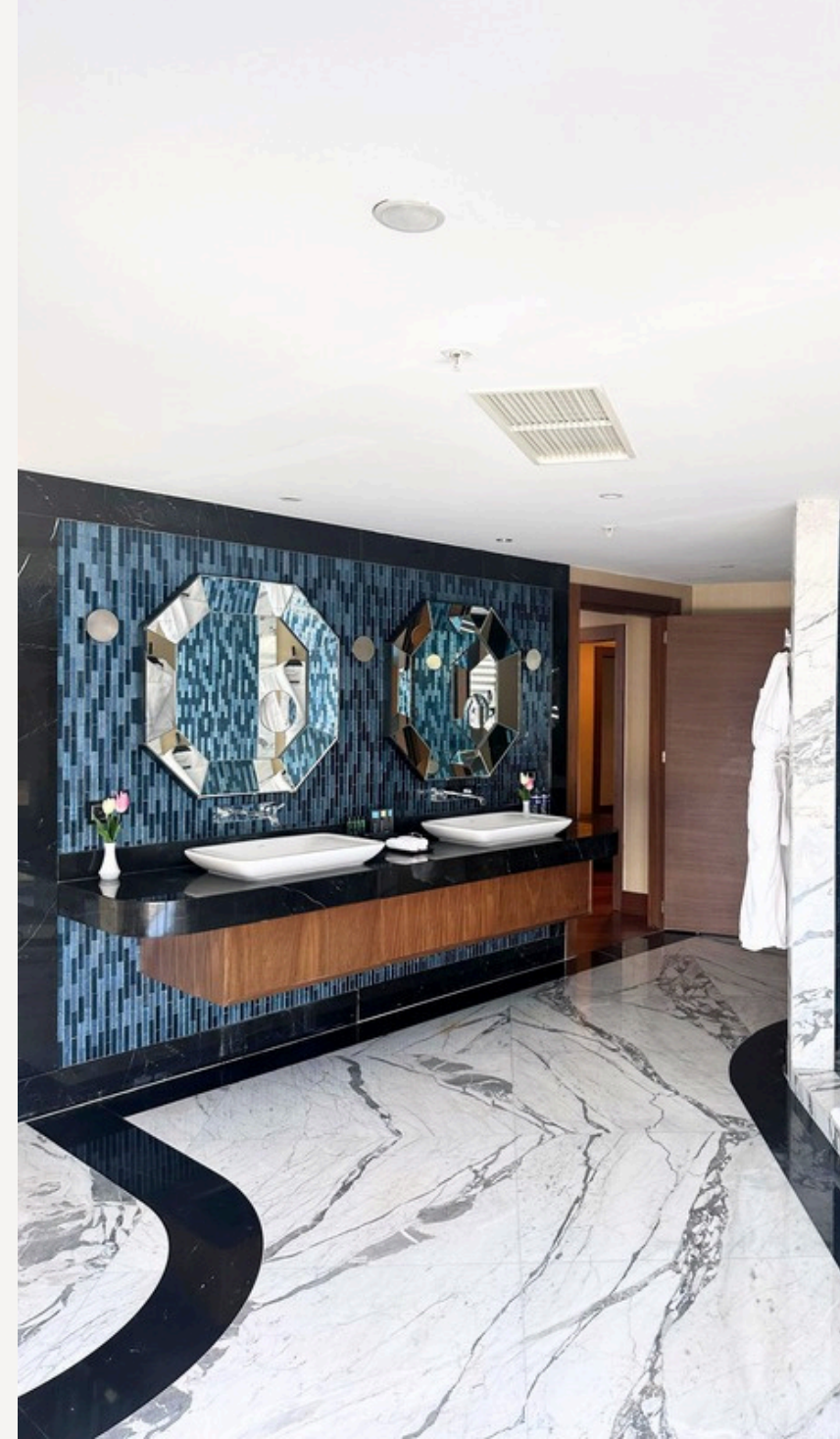
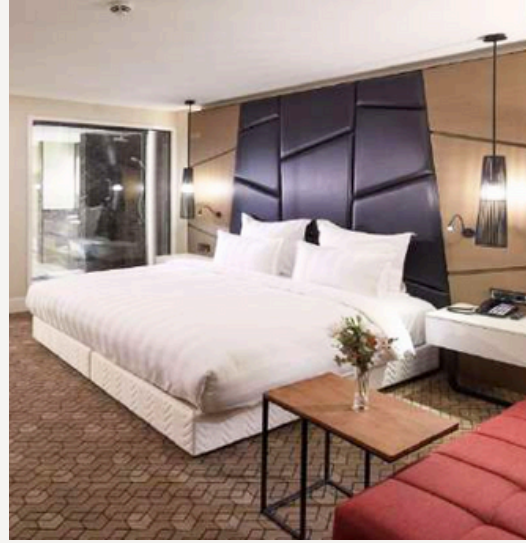




Rooms & Features

171 SUPERIOR ROOMS
162 DELUXE ROOMS
10 DELUXE SUITES
21 EXECUTIVE SUITES
1 PRESIDENTIAL SUITE

pullmanistanbul.com

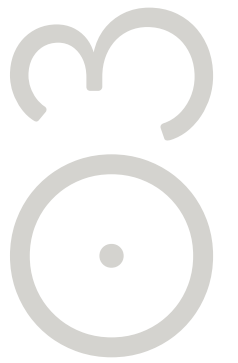


20

In-Room Highlights

- Adjustable Air Conditioning
- Opening Windows
- Direct-Dial Dual-Line Telephone
- 40" LCD TV with Satellite Channels
- Minibar and Coffee/Tea Facilities
- Nespresso Machines in Deluxe Rooms
- In-Room Safe
- Spacious Work Desks
- Rain Shower Bathrooms with Premium Amenities
- Hairdryer
- Iron and Ironing Board (upon request)
- Non-Smoking Rooms





Restaurants & Bars

EXPLORE A VARIETY OF CULINARY VENUES DESIGNED TO DELIGHT EVERY TASTE – FROM INTERNATIONAL CUISINE TO FINE WINES AND SOPHISTICATED LOUNGES.

- **Vintage Restaurant** – International dishes with buffet and à la carte service.
- **Avenue Hookah Lounge & Bar** – Cocktails, premium beverages, and terrace relaxation.
- **Vinoteca by Pullman** – Curated global wine selection in an elegant setting.
- **Tea Deli** – Specialty teas served in a refined lounge atmosphere.
- **Lobby Bar** – Nespresso Grand Cru coffee and light snacks.
- **Executive Lounge** – Exclusive breakfast, refreshments, and private services for suite guests.



Pullman Convention Center

ISTANBUL'S PREMIER EVENT DESTINATION

16,000 SQM TOTAL MEETING SPACE

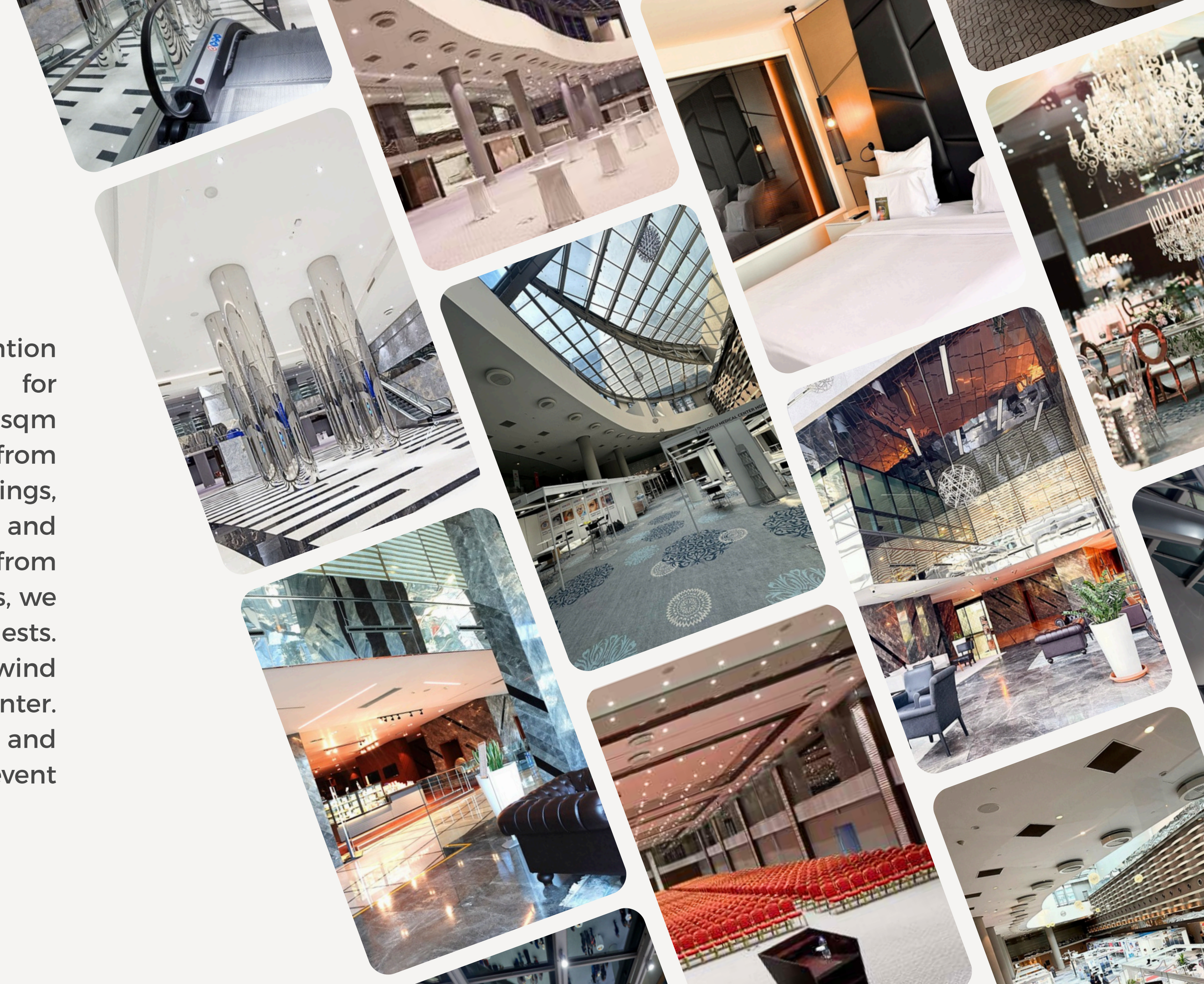
Capacity up to **7,000** guests

- Pillarless Grand Ballroom (**1,680 sqm**)
- Babylon Hall (**650 sqm**) for mid-sized events
- Skylight Hall with natural daylight and high ceilings
- **35** additional breakout rooms across Ground, Mezzanine, and Lobby levels
- **51** Modular Meeting Rooms



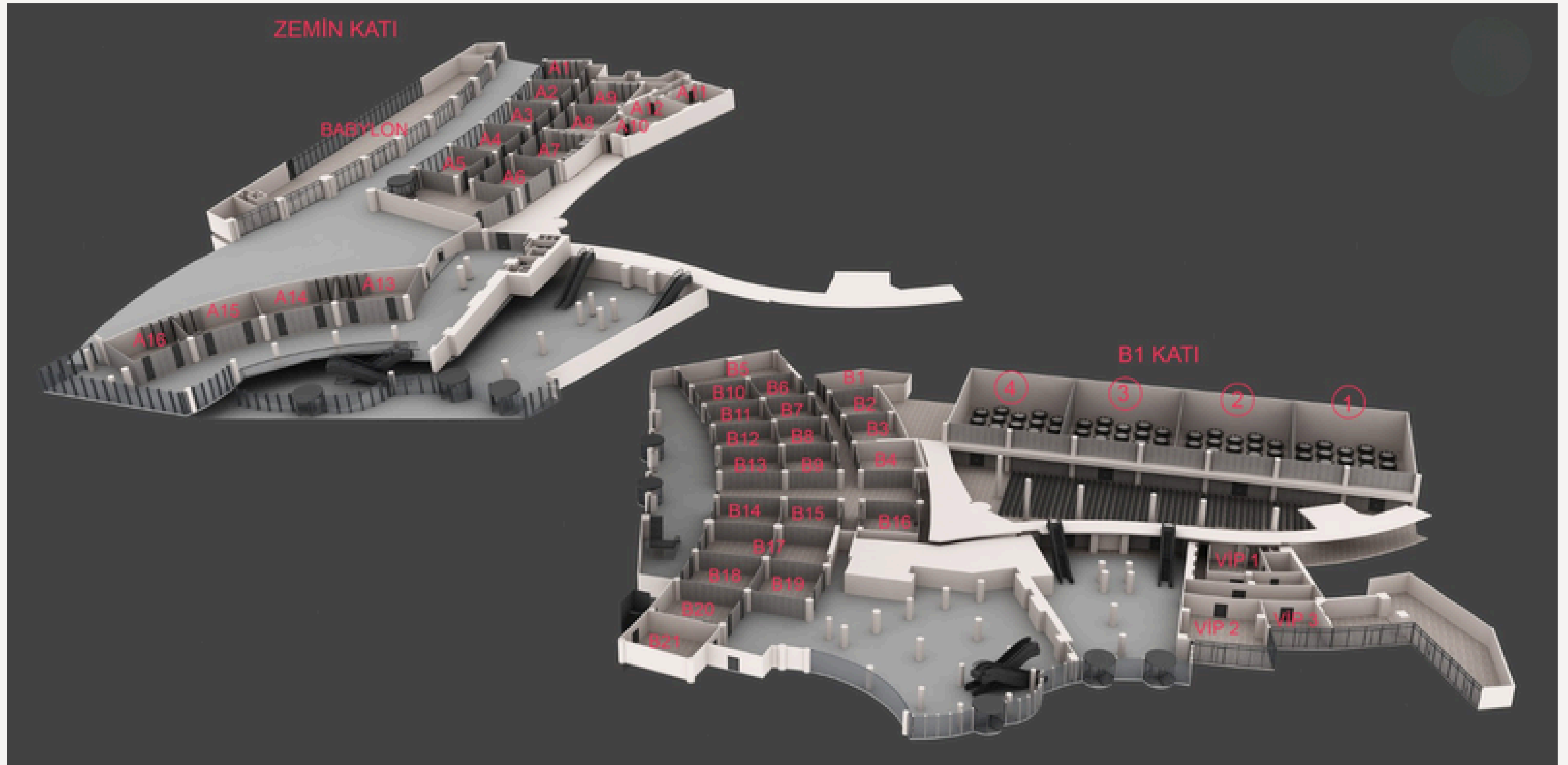
Why US?

Pullman Istanbul Hotel & Convention Center offers the perfect setting for unforgettable events. Our 16,000 sqm convention center hosts everything from major conferences to private meetings, supported by 780 stylish rooms and suites. Located just minutes from Istanbul Airport, with easy city access, we ensure effortless travel for your guests. After a productive day, they can unwind in our spa, indoor pool, and fitness center. With exceptional culinary services and seamless hospitality, we turn every event into a success.



PULLMAN ISTANBUL CONVENTION CENTER

FLOOR PLAN



PULLMAN ISTANBUL CONVENTION CENTER

NAME	THEATRE	CLASSROOM	U SHAPE	BANQUET	COCKTAIL	CABARET	BOARDROOM	SPACE	SIZE (m)	HEIGHT (m)
Ballroom 1	500	250	100	300	500	240	80	420	23,47/17,98	8.15
Ballroom 2	500	250	100	300	500	240	80	420	23,47/18,10	8.15
Ballroom 3	500	250	100	300	500	240	80	420	23,47/18,10	8.15
Ballroom 4	500	250	100	300	500	240	80	420	23,47/17,98	8.15
Ballroom	2000	1000	400	1200	2000	960	320	1680	23,47/72,16	8.15
Skylight Hall	-	-	-	800	1200	500	-	1100	-	18.5
Babylon	400	300	120	400	400	320	100	650	60/10,80	4
Ground Floor B1	100	50	35	50	100	40	35	95	8,94/10,38	3.2
Ground Floor B2	100	50	35	50	100	40	35	95	8,97/10,38	3.2
Ground Floor B3	100	50	35	50	100	40	35	100	9,19/10,39	3.2
Ground Floor B4	100	50	35	50	100	40	35	100	9,24/10,39	3.2
Ground Floor B5	100	50	35	50	100	40	35	85	9,79/8,69	3.2
Ground Floor B6	100	50	35	50	100	40	35	85	9,71/8,66	3.2
Ground Floor B7	100	50	35	50	100	40	35	90	9,96/8,66	3.2
Ground Floor B8	100	50	35	50	100	40	35	90	9,98/8,66	3.2
Ground Floor B9	100	50	35	50	100	40	35	95	10,64/8,95	3.2
Ground Floor B10	100	50	35	50	100	40	35	95	10,83/8,97	3.2
Ground Floor B11	120	60	40	60	110	40	40	115	10,77/10,00	3.2
Ground Floor B14	100	50	35	50	100	40	35	95	10,38/9,22	3.2
Ground Floor B15	100	50	35	50	90	40	35	85	8,89/10,05	3.2
Ground Floor B16	100	50	35	50	100	40	35	85	8,87/9,94	3.2
Ground Floor B17	200	100	70	100	200	80	70	175	18,84/9,2	3.2
Ground Floor B18	120	60	35	70	85	50	40	115	10,38/9,06	3.2
Ground Floor B19	100	50	35	50	100	40	35	95	8,88/9,86	3.2
Ground Floor B20	100	50	35	50	100	40	35	100	10,76/9,56	3.2
Ground Floor B21	100	50	35	50	100	40	35	100	10,82/8,44	3.2

PULLMAN ISTANBUL CONVENTION CENTER

NAME	THEATRE	CLASSROOM	U SHAPE	BANQUET	COCKTAIL	CABARET	BOARDROOM	SPACE	SIZE (m)	HEIGHT (m)
Mezzanine A1	100	50	35	50	100	40	35	90	9,68/8,64	3.6
Mezzanine A2	100	50	35	50	100	40	35	90	9,71/8,63	3.6
Mezzanine A3	100	50	35	50	100	40	35	90	9,95/8,62	3.6
Mezzanine A4	100	50	35	50	100	40	35	90	9,92/8,62	3.6
Mezzanine A5	100	50	35	50	100	40	35	90	9,62/8,61	3.6
Mezzanine A6	100	60	40	60	120	50	40	115	10,46/8,96	3.6
Mezzanine A7	120	60	40	60	110	40	40	115	10,65/10,07	3.6
Mezzanine A8	100	60	40	60	120	50	40	100	10,87/9,04	3.6
Mezzanine A9	100	60	40	60	120	50	40	100	10,57/9,03	3.6
Mezzanine A10	70	35	30	40	80	30	24	65	8,33/7,59	3.6
Mezzanine A11	100	50	35	50	90	40	35	85	9,40/8,26	3.6
Mezzanine B1	80	40	35	50	80	40	35	75	8,51/8,60	3.8
Mezzanine B2	100	50	35	50	100	40	35	90	8,46/10,51	3.8
Mezzanine B3	100	50	35	50	100	40	35	90	8,47/10,47	3.8
Mezzanine B4	100	50	35	50	100	40	35	90	8,55/10,54	3.8
Convention VIP 1	120	60	40	70	120	60	40	120	8,20/6,53	2.5
Convention VIP 2	60	30	25	40	60	40	25	70	8,10/6,21	2.5
Convention VIP 3	60	30	25	40	60	40	25	70	9,17/8,66	2.5
Pullman Mezzanine 1	50	30	25	30	50	25	20	52	8,10/6,21	2.5
Pullman Mezzanine 2	50	30	25	30	50	25	20	52	8,10/6,21	2.5
Pullman Mezzanine 3	80	50	35	50	80	40	30	80	9,17/8,66	2.5
Pullman Mezzanine 4	80	50	35	50	80	40	30	80	8,52/9	2.5
Pullman Lobby Meeting Room 1	65	30	24	30	65	25	20	55	7,25/6,81	3.9
Pullman Lobby Meeting Room 2	65	30	24	30	65	25	20	55	7,25/6,81	3.9
Pullman Lobby Meeting Room 3	65	30	24	30	65	25	20	55	7,25/6,81	3.9
Pullman Lobby Meeting Room 4	65	30	24	30	65	25	20	55	7,25/6,81	3.9

Standard Meeting Hall Equipment

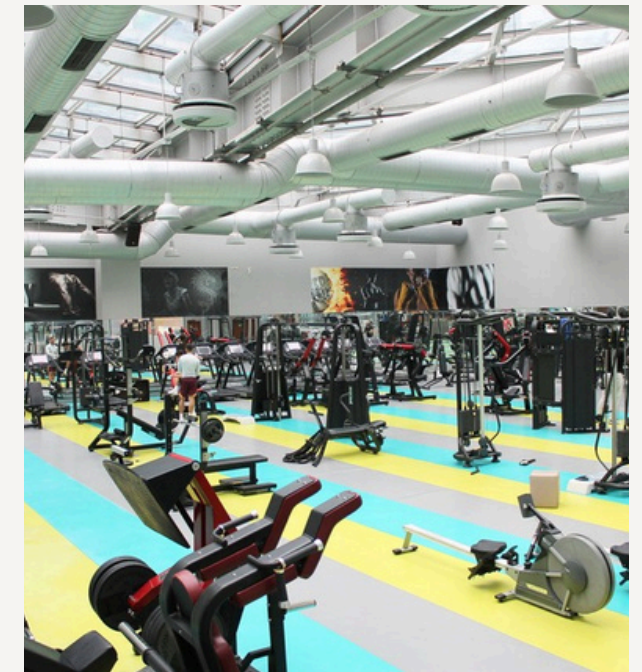
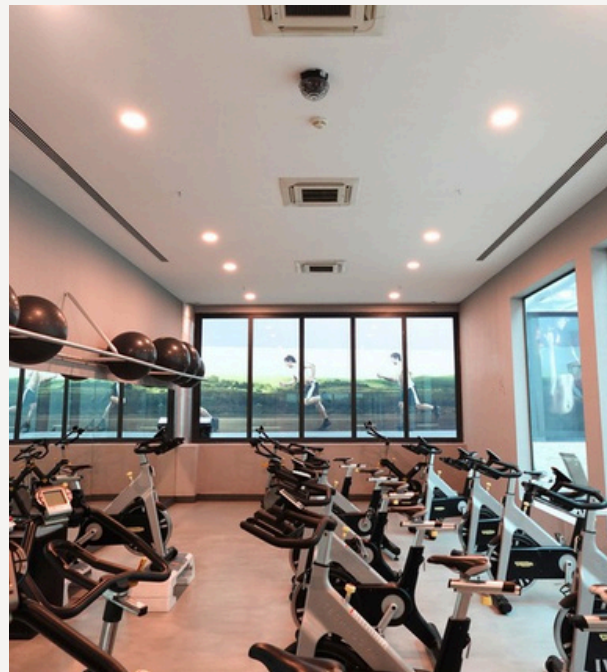
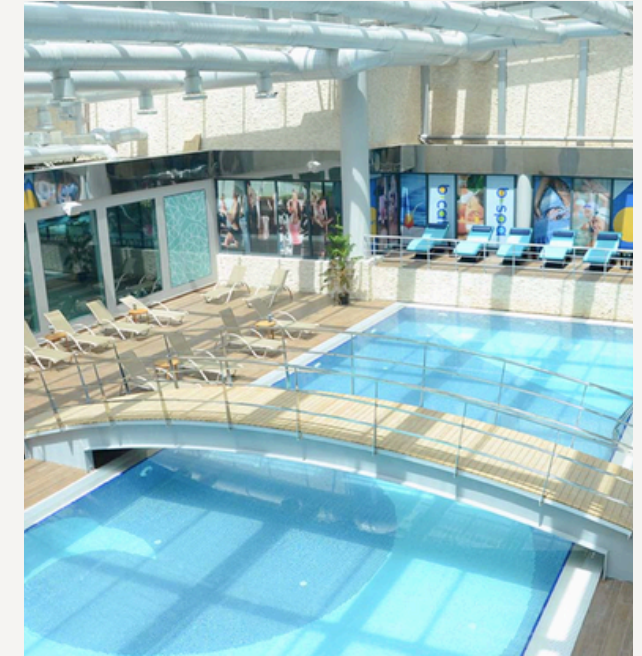
- Motorized projection lift system
- Integrated presentation and audio system
- High-quality meeting audio setup
- DVD player for media playback
- Full infrastructure support for A/V presentations
- LED screens in foyer areas
- In-hall audio system for announcements and background music
- Emergency broadcast system
- Wired and wireless lapel microphones
- Blackout curtains for optimal visual presentation conditions



Fit & SPA

UNWIND IN OUR 3500 SQM STATE-OF-THE-ART SPA AND FITNESS CENTER, DESIGNED TO OFFER ULTIMATE RELAXATION AND REJUVENATION. INDULGE IN A RANGE OF MASSAGE THERAPIES AND WELLNESS TREATMENTS TAILORED TO ELEVATE YOUR EXPERIENCE.

- A fully equipped fitness center with the latest technology
- Private training rooms for a personalized workout experience
- A glass-ceiling indoor pool for a serene swim
- Turkish baths, steam rooms, and sauna for deep relaxation
- Luxury VIP massage suites featuring a private spa, jacuzzi, and premium treatments.



ACCESS TO THE HOTEL

ADDRESS: YENİBOSNA MERKEZ MAH.
ASENA SK. NO:15 BAHÇELİEVLER - ISTANBUL,
TURKEY

PHONE: +90 212 411 10 00

FAX: +90 212 592 58 68

EMAIL: INFO@PULLMANISTANBUL.COM

TRANSPORTATION:

- 40 MINUTES FROM ISTANBUL AIRPORT VIA EXPRESS HIGHWAY
- 5 MINUTES TO E5 AND AIRPORT EXPRESSWAY ACCESS
- METROBUS AND METRO STATIONS WITHIN WALKING DISTANCE
- 24/7 TAXI SERVICE AVAILABLE NEARBY

Discover more on our Instagram page



SCAN HERE:





MERCURE HOTEL

ISTANBUL WEST & CONVENTION CENTER



WELCOME TO

MERCURE WEST ISTANBUL HOTEL

Bringing modern comfort, smart design,
and seamless stays to Istanbul.



About The Hotel



Modern Style | Local Charm | Relaxed Elegance

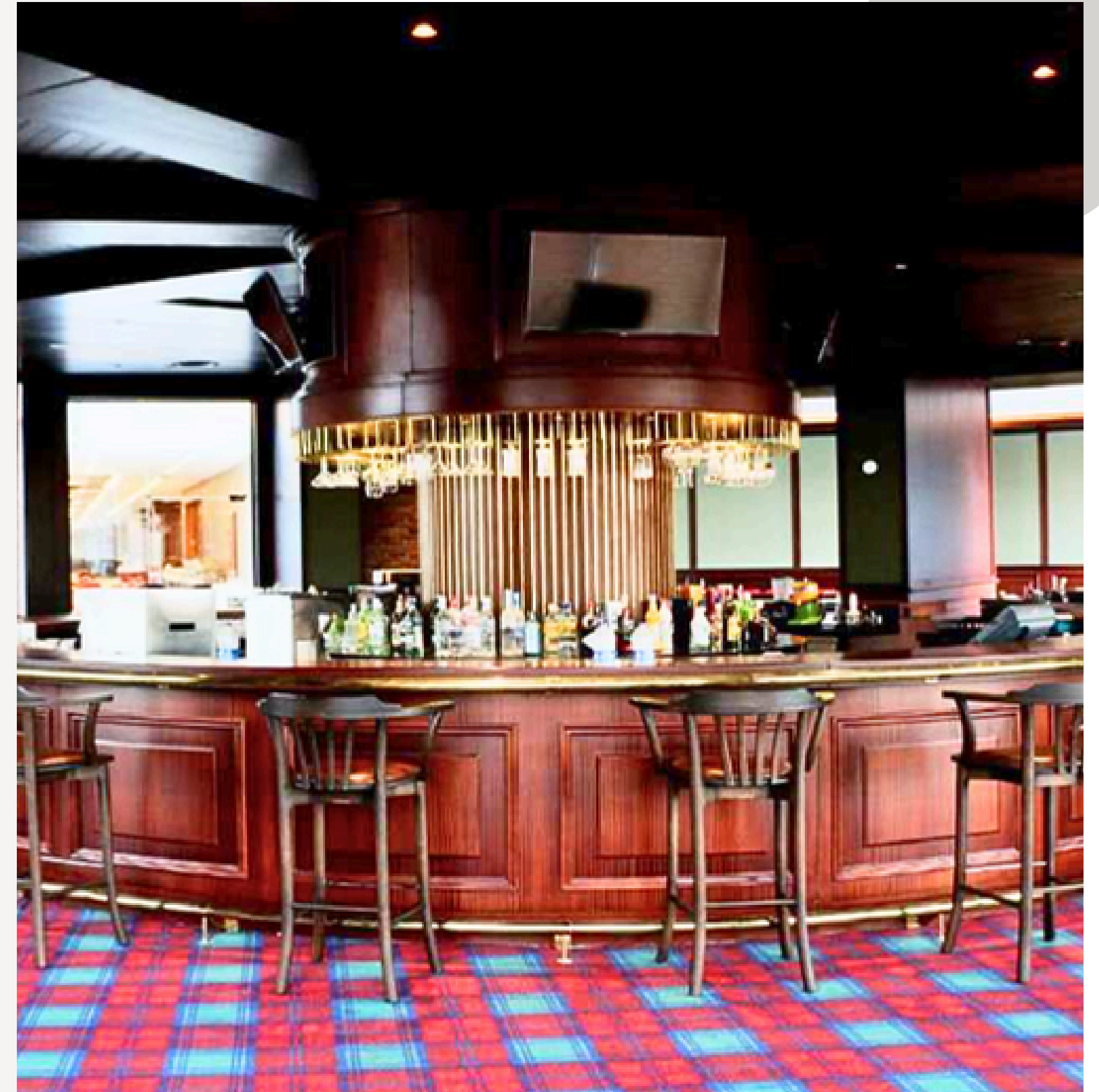
5-Star Comfort | 377 Rooms & Suites

Mercure West Istanbul Hotel offers contemporary comfort with 377 well-appointed rooms and suites, designed for both business and leisure travelers. Guests enjoy full access to a wide range of shared facilities including the Pullman Convention Center, spa & fitness center, indoor pool, and extensive dining options. The hotel also features its own restaurant and bar, 24-hour room service, high-speed internet access, laundry and dry cleaning services, valet parking, and a convenient shuttle to the airport and nearby shopping malls.



General Features

- 377 Rooms & Suites
- On-site Restaurant & Bar
- 24-Hour Room Service
- Laundry & Dry Cleaning Services
- Complimentary Shuttle (Airport & Shopping Mall)
- High-Speed Internet Access
- In-House Hairdresser
- Spa & Fitness Center
- Indoor Swimming Pool
- Secure Carpark & Valet Service
- Full Access to Pullman Convention Center Facilities



Rooms & Features



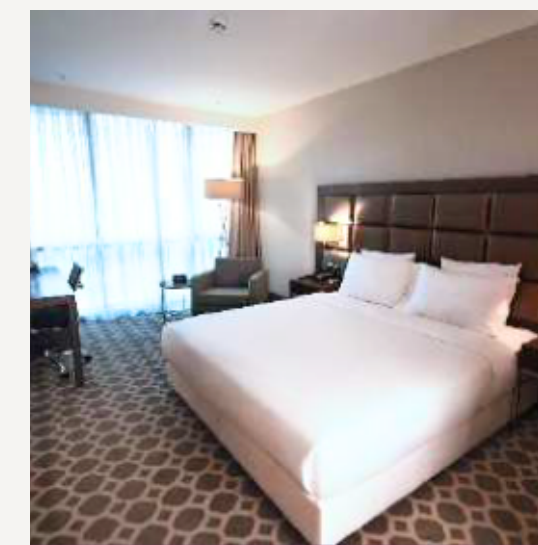
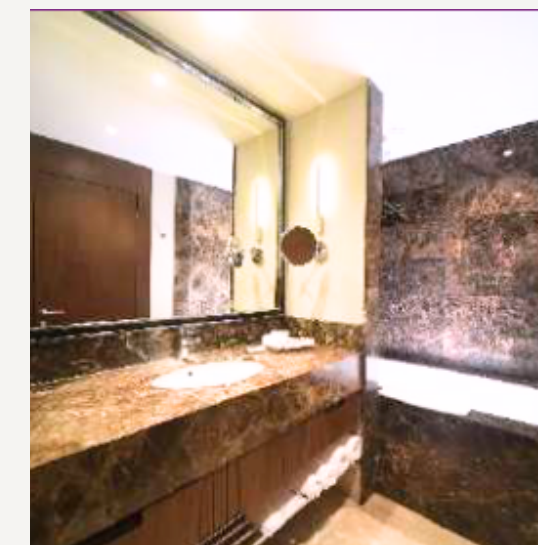
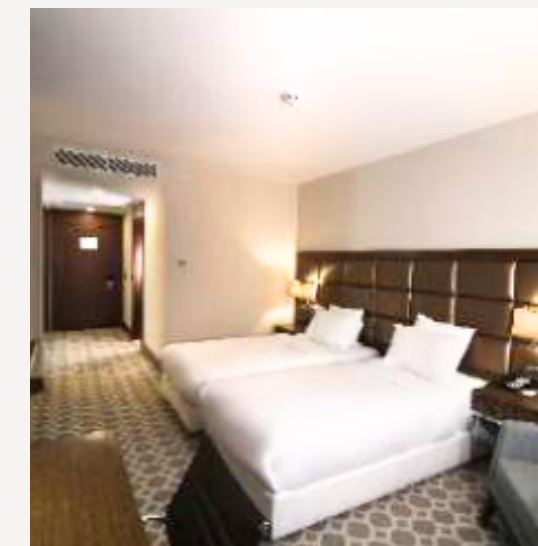
Rooms

377 Rooms & Suites

- 369 Standard Rooms (32 m²)
- 8 Corner Suites (62 m²)

Room Features:

- Adjustable Air Conditioning
- In-room Safe Deposit Box
- Direct-Dial and Dual-Line Telephone
- Free High-Speed Wi-Fi
- Work Desk in All Rooms
- Satellite TV Channels
- 24-Hour Room Service
- Minibar
- Coffee/Tea Making Facilities
- Shower Bath
- Hair Dryer
- Iron and Ironing Board
- Non-Smoking Rooms



SUSTAINABILITY & ENVIRONMENTAL RESPONSIBILITY



At Pullman Istanbul Hotel & Convention Center, we are committed to integrating sustainable practices into our operations in alignment with global environmental standards and Accor's Planet 21 Program. Our approach focuses on reducing environmental impact, optimizing resource efficiency, and fostering social responsibility.

Key initiatives include:

- **Carbon Footprint & Emission Reduction:** We actively work to minimize our carbon footprint by implementing energy-efficient systems, exploring renewable energy solutions, and promoting sustainable transportation options. A comprehensive carbon footprint assessment is planned to enhance our long-term reduction strategies.
- **Energy Efficiency & Emissions Reduction:** Implementation of energy-saving technologies, LED lighting, and automation systems to minimize energy consumption. A comprehensive carbon footprint assessment is planned to enhance our sustainability strategies.
- **Waste Management & Plastic Reduction:** Commitment to zero-waste policies, waste segregation, and eliminating single-use plastics through refillable dispensers and sustainable sourcing.
- **Water Conservation & Responsible Use:** Installation of water-saving fixtures and investment in wastewater treatment and recycling to optimize consumption.
- **Sustainable Sourcing & Community Engagement:** Supporting local suppliers, cultural preservation, and corporate social responsibility initiatives to benefit the community and minimize our footprint.
- **Continuous Improvement & Future Commitments:** We actively monitor and evolve our sustainability framework, ensuring compliance with global best practices while enhancing environmental responsibility across all areas of operation.

At Pullman Istanbul Hotel & Convention Center, we believe sustainability is an ongoing journey, ensuring a greener, more responsible future while delivering exceptional hospitality experiences.

LOYALTY PROGRAM



At Pullman İstanbul Hotel, Mercure West Istanbul & Convention Center, we take pride in offering an exceptional guest experience, further enhanced by our participation in ALL – Accor Live Limitless, Accor’s global lifestyle loyalty program.

As a member, guests enjoy exclusive privileges, rewarding stays, and personalized experiences across Accor's extensive portfolio of hotels worldwide.

Exclusive Member Benefits:

Our loyalty program is designed to reward and elevate every stay, offering a range of benefits based on membership status:

- **Classic (Upon Enrollment):** Member-only rates, complimentary Wi-Fi, and access to exclusive offers.
- **Silver (10 nights / 2,000 Status points):** All Classic benefits, welcome drink upon arrival, priority check-in, and late check-out.
- **Gold (30 nights / 7,000 Status points):** All Silver benefits, guaranteed room availability, early check-in or late check-out, and room upgrades (subject to availability).
- **Platinum (60 nights / 14,000 Status points):** All Gold benefits, executive lounge access, premium Wi-Fi, and enhanced service privileges.
- **Diamond (26,000 Status points):** All Platinum benefits, complimentary weekend breakfast, dining & spa rewards, and the ability to gift Gold status.

Earning & Redeeming Points:

- Earn Reward Points for stays, dining, and eligible services at participating hotels.
- Redeem Points for complimentary stays, unique experiences, and partner rewards worldwide.
- Status Points contribute to advancing membership tiers, unlocking even greater benefits.

As an ALL – Accor Live Limitless member, every stay at Pullman İstanbul Hotel & Convention Center brings more rewards, more privileges, and more exclusive experiences.

For more details, visit all.accor.com